



**NICOLE**

Network for Industrially Co-ordinated Sustainable Land Management in Europe

## NICOLE Working Group meeting information

---

### Venues

---

#### *NICOLE Working Group meeting*



Princes Wharf,  
Wapping Rd,  
Bristol, BS1 4RN,  
United Kingdom

See logistical info sheet for detailed information.

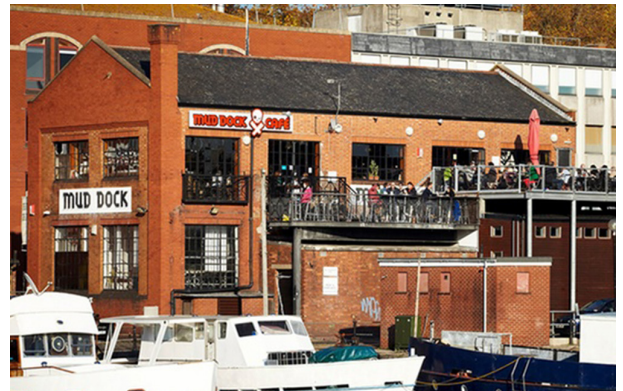


#### *NICOLE & CL:AIRE joint social event*



40 Thr Grove,  
Bristol, BS1 4RB,  
United Kingdom

See logistical info sheet for detailed information.



## Registration

---

Please complete the conference registration form, available online through [NICOLE.org](http://NICOLE.org) and/or the NICOLE secretariat. Deadline for registration: 2 November 2018.

---

## NICOLE Secretariat

---

For further information on NICOLE membership, workshop programs, registration & fees, or any other practical issue regarding the conference, please contact:

Nan Su (Dutch Sino Business Promotions)  
P.O. Box 28249 – 3003 KE Rotterdam, The Netherlands  
Phone: +31 (10) 310 0829  
E-mail: [nan.su@nicole.org](mailto:nan.su@nicole.org)

---



## Wednesday 14 November 2018 NICOLE Working Group program

Venue: Mshed, Princes Wharf, Wapping Rd, Bristol, BS1 4RN, UK

---

**10:00 Working Group Asbestos**  
Chair: Simon Cole

**10:15 WG Land Stewardship**  
Chair: Hans Slenders

**11:00 Coffee break**

**11:15 Regulatory Working Group**  
Chair: Phil Crowcroft & Laurent Bakker

**12:45 Lunch**

**14:00 Service Provider Group**  
Chair: Phil Crowcroft

**14:00 Industry subgroup**  
Chair: Kathy Verhelst

**16:00 Coffee break**

**16:15 Academic Working Group**  
Chair: Tomas Albergaria

**17:15 General Assembly**  
Chair: Johan de Fraye

**18:00 Joint reception with CL:AIRE @ Mud Dock Café**