



NICOLE

Network for Industrially Co-ordinated Sustainable Land Management in Europe

NICOLE Working Group meeting information

Venues

NICOLE Working Group meeting



Princes Wharf,
Wapping Rd,
Bristol, BS1 4RN,
United Kingdom

See logistical info sheet for detailed information.

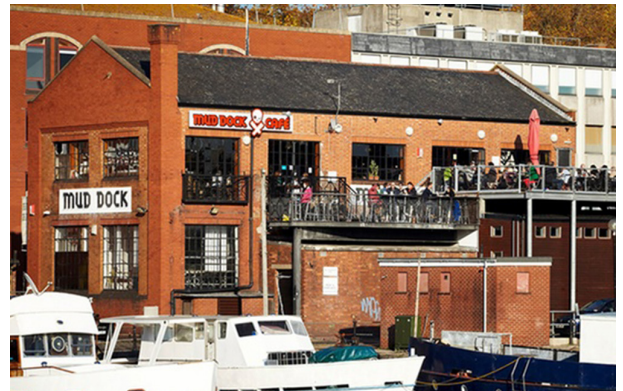


NICOLE & CL:AIRE joint social event



40 Thr Grove,
Bristol, BS1 4RB,
United Kingdom

See logistical info sheet for detailed information.



Registration

Please complete the conference registration form, available online through NICOLE.org and/or the NICOLE secretariat. Deadline for registration: 2 November 2018.

NICOLE Secretariat

For further information on NICOLE membership, workshop programs, registration & fees, or any other practical issue regarding the conference, please contact:

Nan Su (Dutch Sino Business Promotions)
P.O. Box 28249 – 3003 KE Rotterdam, The Netherlands
Phone: +31 (10) 310 0829
E-mail: nan.su@nicole.org



Wednesday 14 November 2018 NICOLE Working Group program

Venue: Mshed, Princes Wharf, Wapping Rd, Bristol, BS1 4RN, UK

- 10:00 Working Group Asbestos**
Chair: Simon Cole
- 11:00 Coffee break**
- 11:15 Regulatory Working Group**
Chair: Phil Crowcroft & Laurent Bakker

12:45 Lunch

14:00 Service Provider Group
Chair: Phil Crowcroft

14:00 Industry subgroup
Chair: Kathy Verhelst

16:00 Coffee break

16:15 Academic Working Group
Chair: Tomas Albergaria

17:15 General Assembly
Chair: Johan de Fraye

18:00 Joint reception with CL:AIRE @ Mud Dock Café